

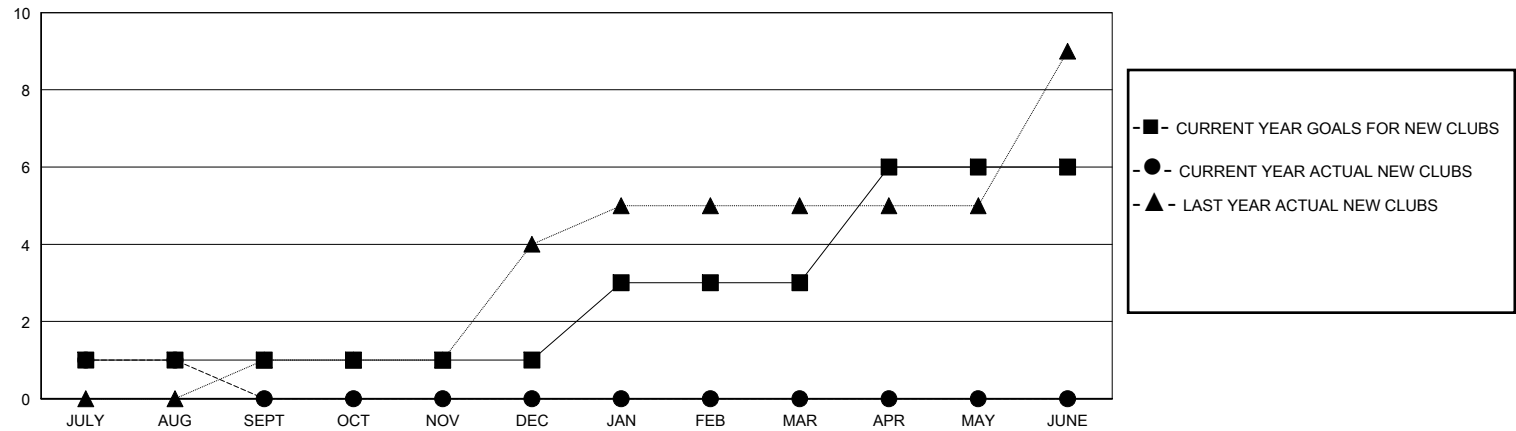
MONTHLY MEMBERSHIP PROGRESS REPORT

District 4 L3

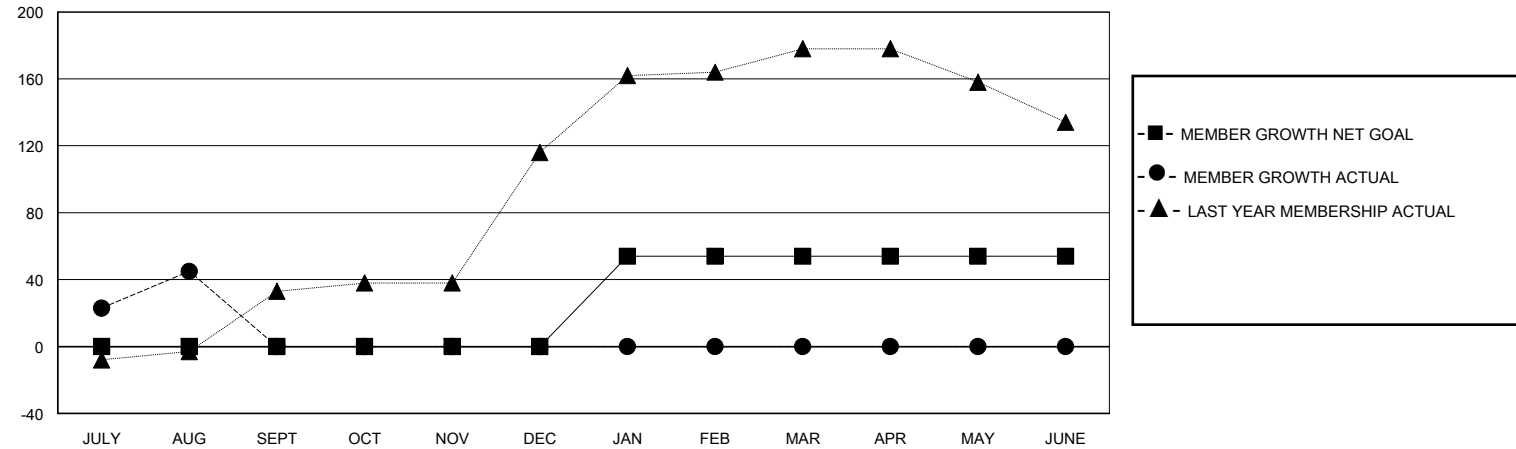
Results as of: 8/31/2025

| GMT: | | | | LOCATION CALIFORNIA | | | | GMT CA | | | |
|-----------------------|---------------|-----------|---------------|-----------------------|------------------------|----------------------|--|--------|--|--|--|
| Clubs | | | | Members | | | | | | | |
| RESULTS FOR 2025-2026 | | | | RESULTS FOR 2025-2026 | | | | | | | |
| QUARTER | NEW CLUB GOAL | NEW CLUBS | DROPPED CLUBS | QUARTER | MEMBER GROWTH NET GOAL | MEMBER GROWTH ACTUAL | DROPPED MEMBERS ACTUAL (including transfers) | | | | |
| JULY/AUG/SEPT | 1 | 1 | 0 | JULY/AUG/SEPT | 0 | 64 | 18 | | | | |
| OCT/NOV/DEC | 0 | 0 | 0 | OCT/NOV/DEC | 0 | 0 | 0 | | | | |
| JAN/FEB/MAR | 2 | 0 | 0 | JAN/FEB/MAR | 54 | 0 | 0 | | | | |
| APR/MAY/JUNE | 3 | 0 | 0 | APR/MAY/JUNE | 0 | 0 | 0 | | | | |

GOALS AND ACTUAL NEW CLUBS CUMULATIVE



GOALS AND ACTUAL MEMBERS CUMULATIVE



| | | | | |
|------------------------|----|---|-------------------------------------|--------------|
| DROPPED CLUBS: 0 | | 17 CLUBS OF 63 ADDED 1 OR MORE NEW MEMBERS | <u>GENDER DISTRIBUTION</u> | |
| | | | MALE | 645 (48.21%) |
| | | | FEMALE | 690 (51.57%) |
| <u>DROPPED MEMBERS</u> | | CLICK HERE FOR CUMULATIVE MEMBERSHIP DATA | | |
| DECEASED | 1 | | TOTAL FAMILY UNIT MEMBERS 265 | |
| CLUB CANCELLED | 0 | | | |
| OTHER | 17 | | FAMILY MEMBERS PAYING HALF DUES 145 | |
| TOTAL | 18 | | | |